



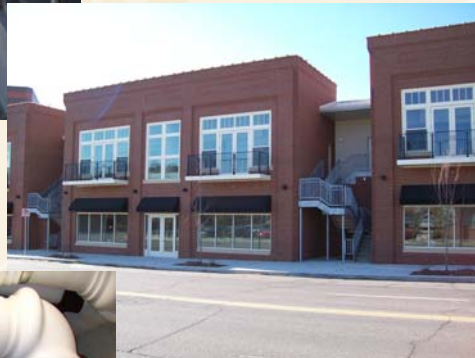
Comfort Zone

Wolin Mechanical • Electrical
Spring 2009

S I N C E 1 9 2 0



Wolin recently completed the Village Place/Oxford Court project for Village Place, LLC, providing complete MEP Design Build services. These buildings house Work/Live retail & residential spaces, as well as high end condominium living in the East Village. The condo units are approximately 3000 square feet and include finishes such as NanaWall* glass walls which offer dramatic views of the city. Minutes from sporting events, restaurants, live music and shopping, these properties offer the best of urban living.



At the owner's request, the facility incorporated multiple sustainable design features. A major component is the Geothermal heating and cooling system. Due to site constraints, there was not enough physical space available to accommodate a typical closed loop well system. Wolin personnel designed and installed a re-injection well system, which utilizes water from 3 separate wells underneath the enclosed parking facility to serve the geothermal system.



After running through a heat exchanger, the water is re-injected into the earth via three re-injection trenches that are also located underneath the parking facility. This is the first re-injection system installed in Central Iowa. In addition to substantial Utility Rebates and Tax Credits, the system uses 40 to 50 percent less energy than a conventional HVAC system, saving the owner and end users utility expenses for the life of the facility.



Hats off to the Wolin Team on this project: Don Bridgeman, Electrical Project Manager, Chad Spyksma, Mechanical Project Manager, and Nate Hagberg, PE, LEED AP, Project Engineer.





P
A
R
K
I
N
G

L
O
T



No more parking on the grass! The new parking lot is finally complete



Thanks to our 2008-2009 United Way donors!

With your help we were able to reach our ambitious goal which was a 75% increase from last year!

Thanks to David Stroh & Tom Mass for their generous company match and a special thanks to Gail Turner our United Way Coordinator for all her hard work!

Please visit www.liveunited.org to learn more about the Live United movement and what you can do to help!

THANK YOU to everyone who donated items to Help Combat Hunger!

Jeremy Vertz

John Ask

Dan Schumacher

KEVIN HAMM

SCOTT HENSEN

Jon Dudley

Jon Stahl

Kurt Loving

Joe Hamel

Billy Campbell

Stephen Bowen

Sam Henderson

Chad Terrell

Randy Patrick

Dave Robertson

CHRIS KNIGHT

Brad Cervine

Troy Donahoe

Ryan Rysavy

Howard Hecht

Sean McDermott

Dave Robertson

Sean Fisher

Randy Oberembt

WINNERS

JOEL MAPES





As a full service MEP Design Build Contractor, we understand the impact that the systems we create and maintain have on the environment. We have 4 LEED® Accredited Professionals (AP) on staff, and more in training. We strive to be a leader in bringing Low Impact, Sustainable MEP designs to our clients and communities.

E
N
V
I
R
O
N
M
E
N
T
A
L

S
T
E
W
A
R
D
S
H
I
P

We also believe in walking the walk. We recently upgraded our 25,000 square feet of shop area to hi output T-5 lighting. This design decreases our watts per fixture by 58%, from 440 watts to 256 watts. In conjunction with this lighting upgrade, we installed a master lighting control system that ensures the lighting is only on during working hours or when the spaces are occupied.

We also installed motion sensing lighting controls in our office areas. All of these upgrades are designed to minimize our carbon footprint.

In addition, as part of the recent site upgrades to our facilities, we installed a new storm water detention system. This system retains the water draining from the impervious surfaces on our building site (roofs, parking, sidewalks), and allows it to naturally seep into the ground, rather than running to the storm sewer system. This not only reduces the capacity needed for the storm sewer system, but maintains the natural water tables, and reduces the potential transfer of items into the drinking water stream.

These are just a few of the changes we have put in place. Going forward, our clients can be assured we are as committed to protecting the environment as they are.



TANKLESS WATER HEATERS



Did you know that “standby losses” can account for 10% to 20% of a facilities’ annual domestic water heating cost? This is the loss of heat through the tank and pipe as the heated water sits in the tank for use. Even if no hot water is drawn from the tank, the heater will kick on periodically to maintain the desired temperature of the stored water. As tankless water heaters have no constant temperature to maintain, that energy is conserved. When combined with thermostatic controls, the units can adjust the energy output when the inlet water temperature fluctuates for even more efficiency. Cold water enters the unit and is heated by a heat exchanger instantly.

A point of use unit is a dedicated service, meaning the unit serves one sink or shower, etc. as these units are smaller and less expensive, where as a unitary system supplies hot water to all fixtures. These units can be more expensive initially than a conventional unit, however the energy saved in the long term must be factored into the overall cost. For more information on these systems and how they may benefit your facility please inquire at www.wolin.com.





More Professionals Join the Wolin Team



Joe Porepp, Project Manager, LEED AP

Joe Porepp is the newest addition to the Electrical project management team, joining our office last year. Porepp has worked in the trade since 1997, obtaining his Journeyman's License in 2001 and his Master License in 2003. Joe resides with his family in Pleasant Hill where he proudly serves as a police officer and firefighter for the city. He enjoys spending time with his family including coaching little league baseball and youth soccer.

Harry French, Service Manager

Harry French joined our organization in February of 2009 and has worked in the trade since 1985. He was part of the crew that work to restore water to the City after the catastrophic floods of 1993. French is a Ham Radio Operator and provides communications for local and state agencies in the event of disaster, as well as providing weather information to the National Weather Services during times of severe weather. He also maintains a website which provides extensive weather information for the city of Van Meter and the surrounding area.



John Morrissey, Service Sales

John Morrissey attended the University of Iowa Henry B. Tippie College of Business and has worked in sales for over 20 years with over 10 years specializing in low voltage security & fire alarm sales, John resides in Johnston with his three sons and is active in the Johnston High School Booster Club. He is also Vice President of Western Catholic Union Fund Raising.

Gary Harper, Project Manager - Service

Gary Harper has worked in the trade since 1972 obtaining both his Plumbing and Mechanical Master's License in 1982. He served Local Union 33 as an instructor for continuing education classes and was also an EPA Refrigerant Certification Test Proctor. Harper held the rank of Sergeant in the US Army 1st Armored Division and served from 1974 to 1976.



Welcome to our new team members!

